

The Control of Japanese Knotweed

page 1



Although Japanese Knotweed is an extremely invasive plant, it can be controlled successfully with the correct strategy.
 (This should be used in conjunction with the Tool Box Talk Managing Japanese Knotweed)

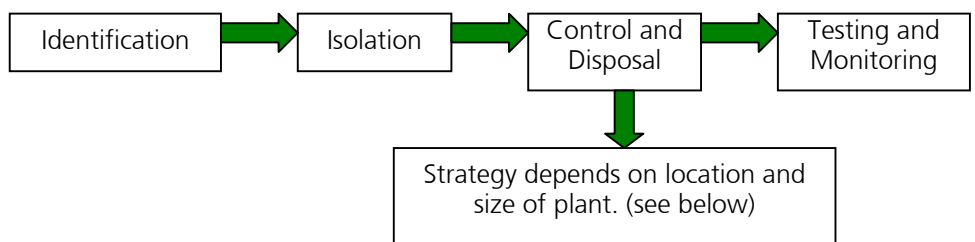
Where does responsibility lie?

If the land is contaminated by Japanese Knotweed it is covered by the Wildlife and Countryside Act 1981 and Environmental Protection Act 1990. Both place responsibility upon those working on the site, i.e. the contractor, to control it. This means:

- It is illegal to allow the plant to spread.
- The plant has a duty of care placed on it and must be treated as a controlled waste.

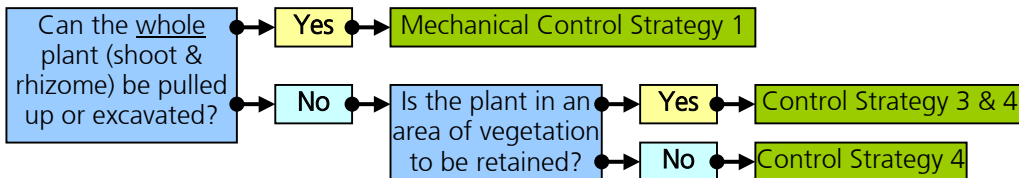


Process of control:

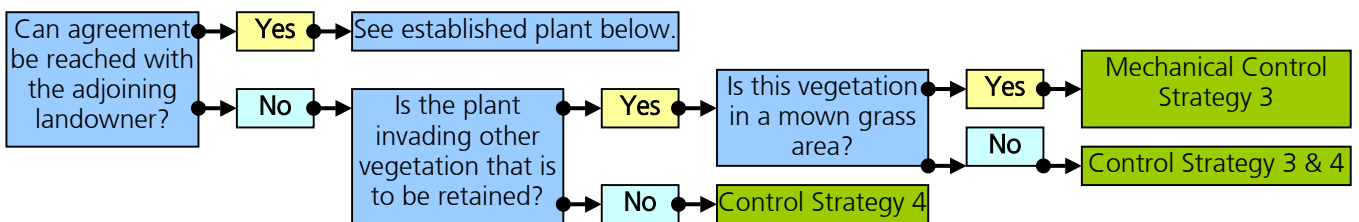


Selecting the correct strategy:

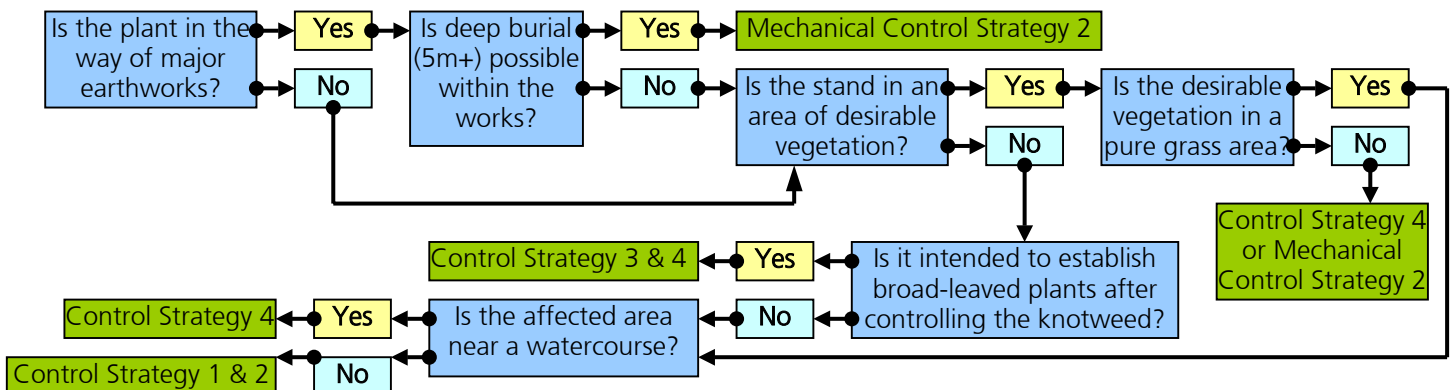
A. Newly emerged, shallow rooted knotweed, e.g. in topsoil



B. Japanese Knotweed invading from land outside the control of the contractor.



C. Established stands of Japanese Knotweed.



The Control of Japanese Knotweed

page 2



Control Strategies (To be carried out with guidance from your Environmental Co-ordinator)

