

# Carillion plc Environmental Tool Box Talk - Pg 1



## Sustainable Transport Plans



### Why should we change our travel behaviour?

We can all see the effects of the way we travel on our environment, our health and our quality of life. Increases in road traffic have produced unsustainable levels of congestion and pollution - at a local level and global level. Journeys by road are becoming slower and more unreliable causing problems for business and stress to drivers.

If no action is taken, road traffic is forecast to increase by up to 50% by 2026 from the current level of 21 million cars.

7 out of 10 journeys to work are by car.

The fuel consumption of 2 cars driven by different drivers on the same route can vary by as much as 30%.

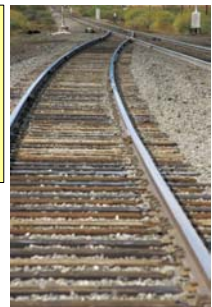
A 10% increase in the number of people cycling regularly would lead to a 4% reduction in the number of people with heart disease, saving the NHS £200 million a year.

### What is a travel plan?

Typically a package of practical measures to encourage staff to choose alternatives to single-occupancy car-use, to reduce the environmental impact of travel and to reduce the need to travel at all to their work. As a minimum a travel plan will usually address travel by staff to and from work and on business - you can also consider on site transport, our Supply Chain and the capacity of our vehicle fleet.

### Why do we need one?

A sustainable travel plan will have many benefits to the organisation, employees and local community. It may help to relieve on-site car parking or congestion problems. It increases choices and may relieve stress. The true costs of car travel are rarely fully quantified, but like any other cost they can be controlled.



| Benefits                   | Employer | Staff | Community |
|----------------------------|----------|-------|-----------|
| Cost Savings               | ✓        | ✓     |           |
| Increased Productivity     | ✓        |       |           |
| Healthier Workforce        | ✓        | ✓     |           |
| Improved Access            | ✓        | ✓     | ✓         |
| Improved Quality of Life   | ✓        | ✓     | ✓         |
| Reduced Stress             | ✓        | ✓     |           |
| Improved Local Air Quality | ✓        | ✓     | ✓         |
| Energy Savings             | ✓        | ✓     |           |
| Reduced Noise              |          |       | ✓         |



### What to consider?

See Sustainable Transport Guidance Note for more detail.

- ♦ **Health and Safety**
- ♦ **Delivery and Site Vehicles**  
e.g delivery times, use of banksmen
- ♦ **Storing and Stacking Materials**
- ♦ **Local issues**  
e.g. location of schools, hospitals, playgrounds, residential areas, who else uses the roads
- ♦ **Management Considerations**  
e.g site access, parking facilities
- ♦ **Methodology**  
e.g selection of construction techniques, prefabrication



## Sustainable Transport Plans

The guidance on this page can be used to develop your own sustainable transport plan in conjunction with other available guidance.

